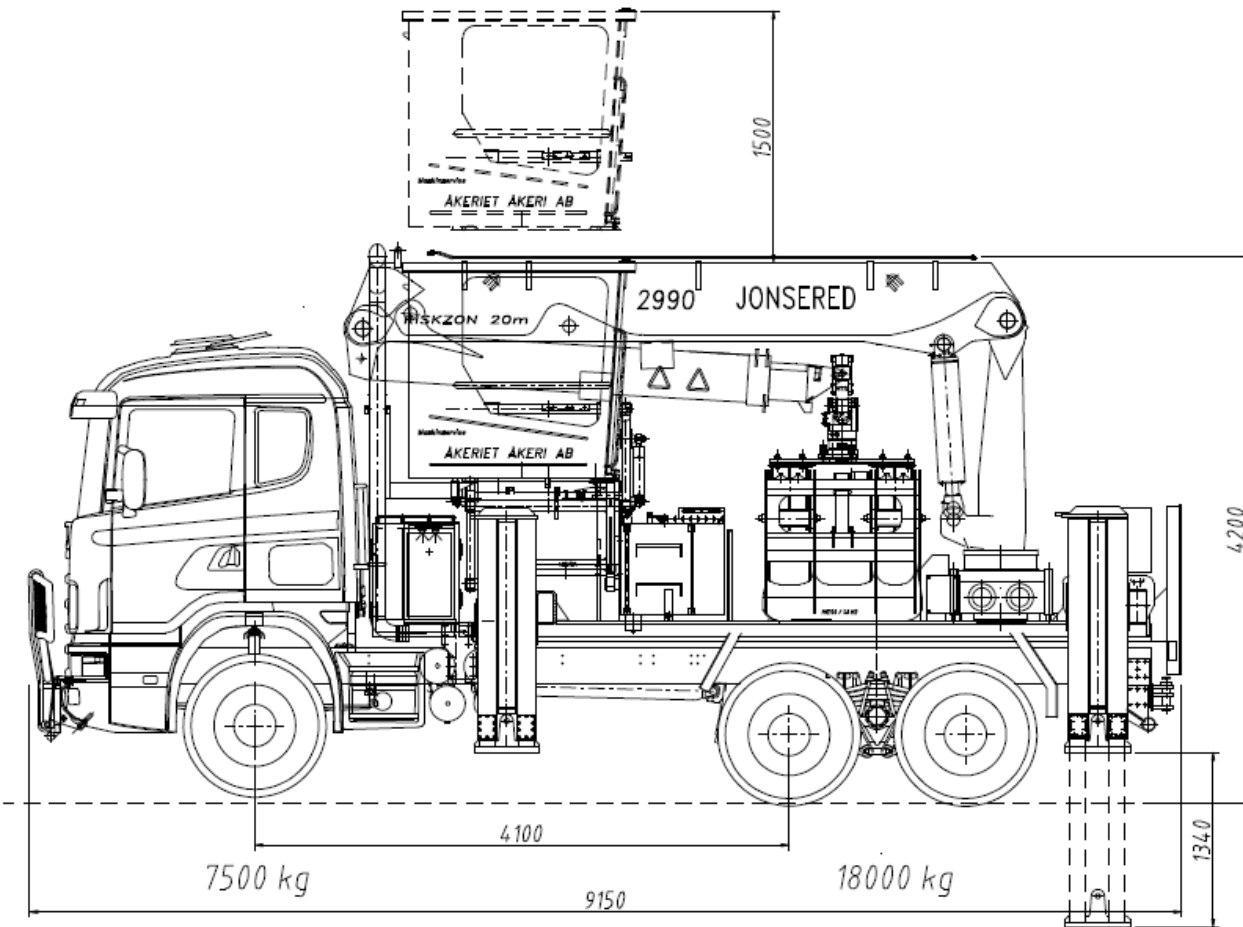


# TIMBERMAN

# TIMBERMAN

## MC32



**Maskinservice  
I Bergqvist AB**  
Tegelbruksvägen 8, S-821 43 Bollnäs  
Telefon 0278-20410 Telefax 0278-35420  
Org nr/Vat No SE 556718807201



**Maskinservice  
I Bergqvist AB**  
Tegelbruksvägen 8, S-821 43 Bollnäs  
Telefon 0278-20410 Telefax 0278-35420  
Org nr/Vat No SE 556718807201



[timberman.se](http://timberman.se)

[timberman.se](http://timberman.se)





### New Cab

Everything is controlled from panels on armrests and from a multifunction screen. The cab is adjustable in height, rubber mounted, equipped with ventilation systems with AC, air suspended seat and sunshades.



### New support legs

New profile for steady loading "self-locking". Longer stroke to cope with deep ditches. Suitable for parallel movement of the machine sideways. Vertical 1340 mm Horizontal 1000 mm.



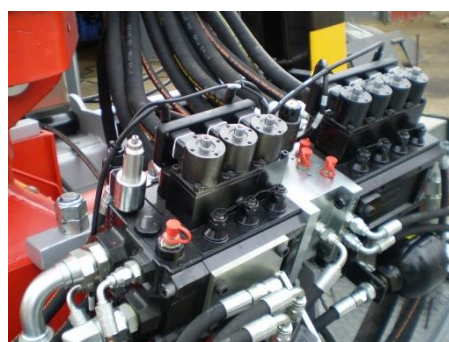
### Folded rear blade

Rear blade can be folded and used as a grader blade.



### Grappels

Grappels with 3 options  
 MG100 STD grapple on 1sqm.  
 MG108 "stone grapple" 1sqm  
 MG80 new grip with less area 0.8 sqm.  
 All grappels are equipped with hydraulic winch strap to hold the timber when lifting with a few logs in the grapple.



### Hydraulic system

The crane is controlled by Olsbergs PV90 valve  
 The outriggers are controlled via Olsbergs PV91 valve  
 All valves are load-sensing and pressure compensated. Speed can be changed for all functions.



### Hydraulic pumps

The machine is equipped with 3 pumps.  
 2 load-sensing pumps.  
 1 fixed servo pump.

### Superstructure

The entire superstructure was redesigned and built with high-strength steel in order to withstand the weight of the crane.

### Operation

The entire vehicle can be driven from the crane cab through a CAN-based control system. Works together with...

### Cran

Jonsered 2990,  
 Length 10 m  
 Alternative length 10-17 m

### Weighing device

Hydraulic weighing device equipped with automatic venting system. All weight measurements are stored...